



Hydraulic systems for truck tractors

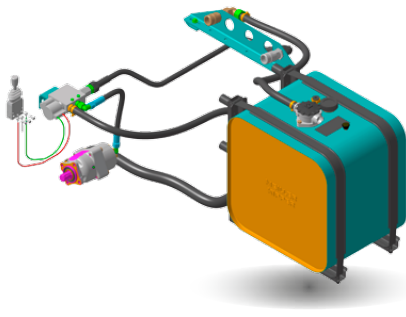
Quality and variety for every demand

| meiller.com

Hydraulic systems for truck tractors

Quality and variety for every demand

MEILLER hydraulic systems are characterised by high quality, operational safety and a long service life. Thanks to a wide range of versions, we can supply you with exactly the hydraulic system you need, tailored to your individual requirements and operation conditions. We offer control valves for different pressure ranges, hydraulic tanks in a variety of sizes and materials, a large selection of hose couplings, hydraulic pumps in a large number of variants as well as many other options as required.



Wide range to meet your specific requirements

The MEILLER hydraulic systems for truck tractors can be ordered and delivered in the following versions:

- 1-circuit hydraulic systems for truck tractors
- 2-circuit hydraulic systems for truck tractors
- Push floor/tipper semitrailer
- Push floor semitrailer
- Tipper semitrailer/low-loader system (2-circuit pump)

Hydraulic system

The following pressure ranges can be realised:

- Low pressure, 150 bar
- High pressure, 275 bar
- Low/high pressure, switchable between 150/275 bar
- MEILLER semi 200 bar
- MEILLER semi 250 bar with hydraulic tailgate
- Medium/high pressure, switchable between 200/275 bar

Your benefits:

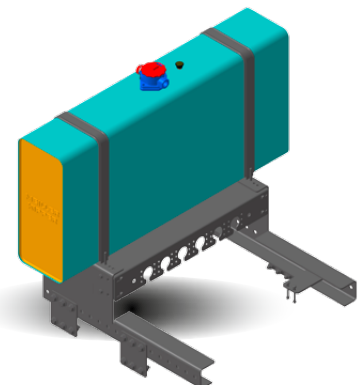
- Switchable pressure ranges
- Pressure shut-off device for low wear operation and to protect the hydraulic system against overpressure



Optimum payload even with restricted available space

Due to the different space conditions on the truck tractor, the oil tanks are available in a variety of sizes and for various mounting locations as well as **with and without return flow filter**. In order to **optimise** the **payload** of your vehicle, tanks for lateral attachment can be ordered in the aluminium version as well as the steel version.

Usable oil volume	Dimensions	Mounting location	Material
130 litre	490 x 600 x 620 mm	At the side	Steel
135 litre	1 000 x 620 x 620 mm	Behind the cabin	Steel
180 litre	660 x 600 x 620 mm	At the side	Steel
180 litre	1 300 x 620 x 260 mm	Behind the cabin	Steel
121 litre	400 x 636 x 706 mm	At the side	Aluminium
154 litre	500 x 636 x 706 mm	At the side	Aluminium



Example of attachment behind the cabin

Practical mounting KIT

In addition to mounting at the factory, the hydraulic systems for truck tractors can also be ordered as a practical mounting KIT for all vehicle types.

A clearly structured manual ensures ease of assembly and enables rapid, uncomplicated mounting of the systems. Independent of the type of vehicle and manufacturer, a hydraulic system that is optimally matched to your vehicle and intended purpose can be assembled from the variety of kit variants and possible combinations.

Basic construction kit, consisting of:

- 9-piston axial pump
- Control valve with hold position and pressure shut-off device, the stroke and lowering speed can be controlled
- Set of line parts including pneumatic operating system for control valve

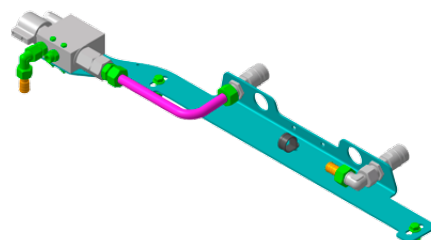
Additional parts:

- Oil tank with mounting parts for mounting at the side or behind the cabin
- Connection parts for existing combination tank
- Set of line segments for return line
- Couplings with protector cap and bracket

Choose from a wide variety of options

Thanks to our large selection of optional equipment, you can assemble your system to meet your individual requirements. The following options (as well as others) are available:

- **Multi plate** with pre-mounted components for rapid mounting (only for MAN Euro 6 TGS/TGX, 4x2/4x4 and Mercedes Euro 6 Actros/Arocs 4x4)
- Compact **MEILLER mobile i.s.a.r. remote control** for convenient control of the hydraulic system (with MEILLER tarpaulin system, it can also control the tarpaulin; only available for tipper semi-trailer systems)
- **Load sensing hydraulic system** for single-circuit and double-circuit systems
- Swivel arm in **1-line and 2-line version** for secure positioning of the hydraulic hoses to protect them against damage or tearing off when cornering
- **Further options on request**



Multi plate with pre-mounted components for rapid mounting



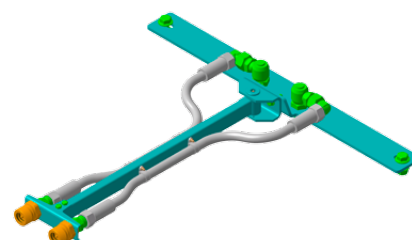
MEILLER mobile i.s.a.r. remote control for convenient control of the hydraulic system (only for tipper semitrailers)



Various hose couplings for individual combinations of the hydraulic system with trailers from all manufacturers (other couplings can be ordered)



Mounting kit for universal attachment on the vehicle (optional)



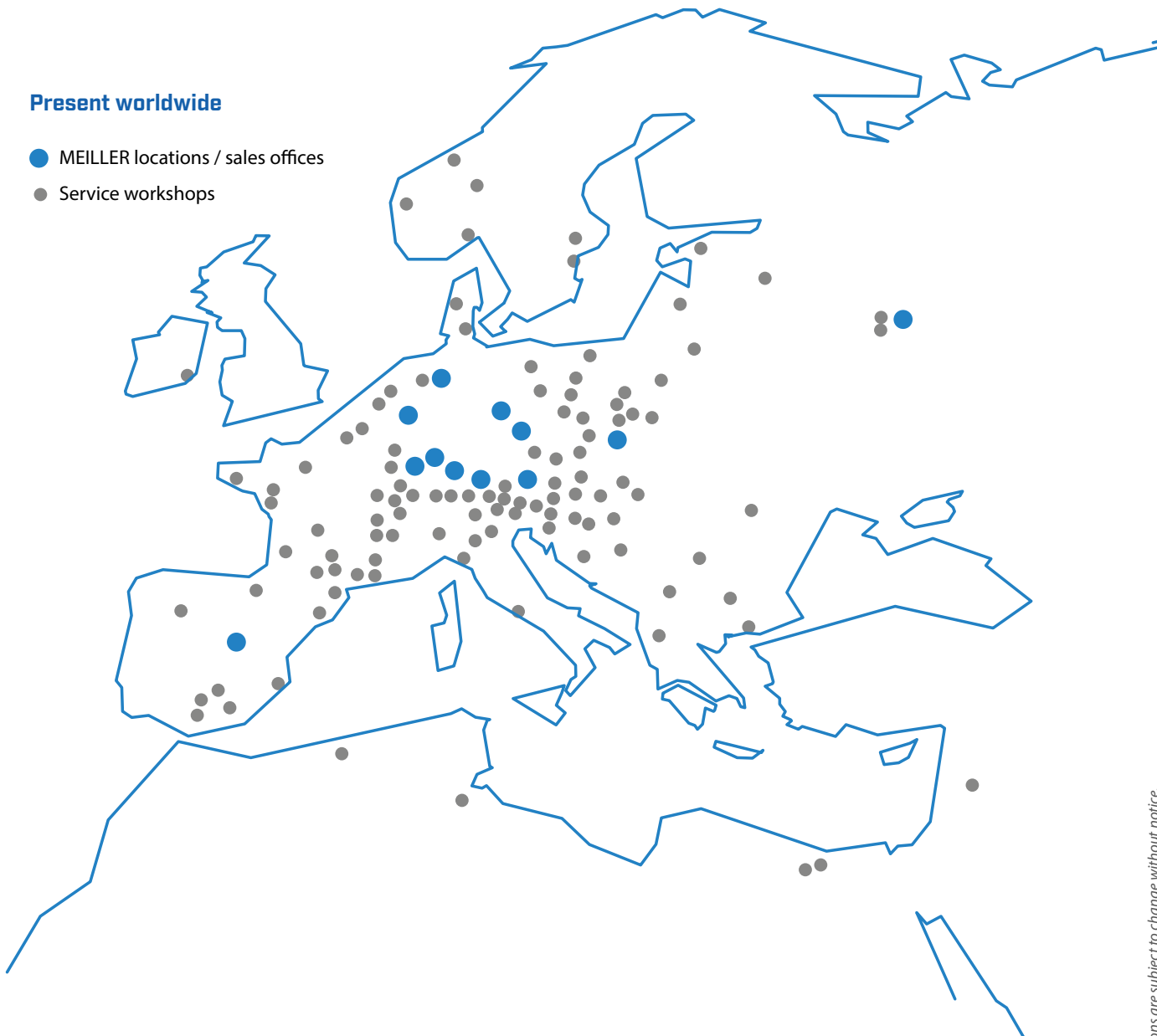
Swivel arm in 2-line version

MEILLER close to you

Full service from a single source

Present worldwide

- MEILLER locations / sales offices
- Service workshops



There's a MEILLER location near you. Find the service workshops closest to you by searching online at

meiller.com/service

1676_En-761-0318
Technical specifications are subject to change without notice.
Illustrations may show special equipment.